



JEFFERSON
BEHAVIORAL
HEALTH

An overview of JBH

What is Jefferson Behavioral Health

Jefferson Behavioral Health is a Mental Health Organization that contracts with the State of Oregon Addictions and Mental Health Division to manage mental health services for members of the Oregon Health Plan. This Contract is called the MHO Agreement.

What We Do

- JBH does not provide services, but ensures that our members are receiving the services they are entitled to through our contracted CMHPs and Providers.
- JBH provides reimbursement for any services provided, through tracking Encounter Data. This is done through our third party data system, PhTech.

Jefferson Behavioral Health

- Contracts directly with Community Mental Health Programs and Providers to provide the covered services.
- Services must be consistent with the Oregon Administrative Rules (OARs), Oregon Revised Statutes (ORSs), and the Prioritized list of Health Services.

What We Do Continued

- JBH Ensures that Quality is being tracked through a variety of activities. This is done through our Quality Management Committee.

Examples:

- Consumer Satisfaction
- Grievances
- Access To Services
- Restraint/Seclusion
- Performance Improvement Projects
- System Capacity
- Credentialing of Providers

JBH Internal Structure

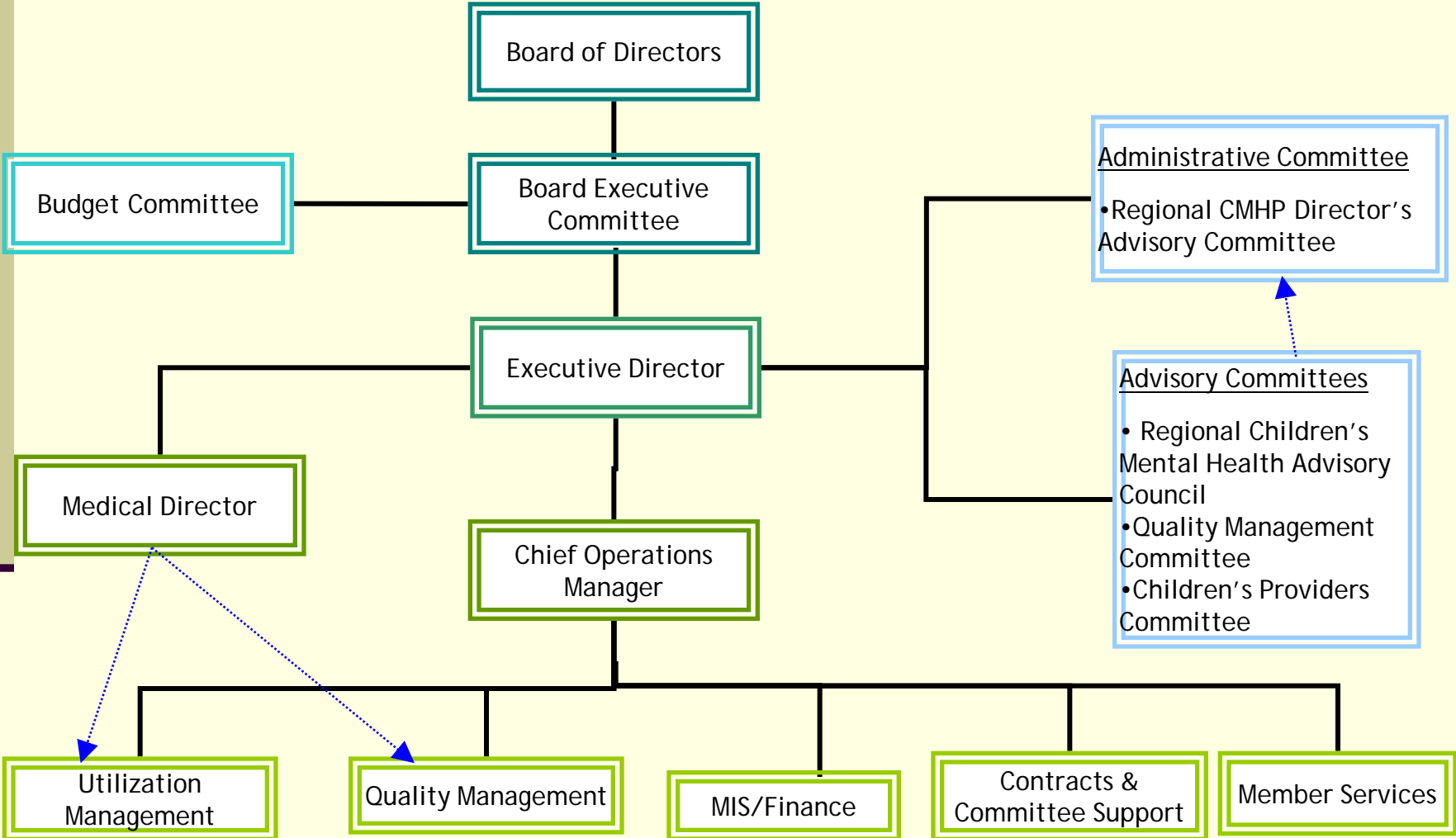
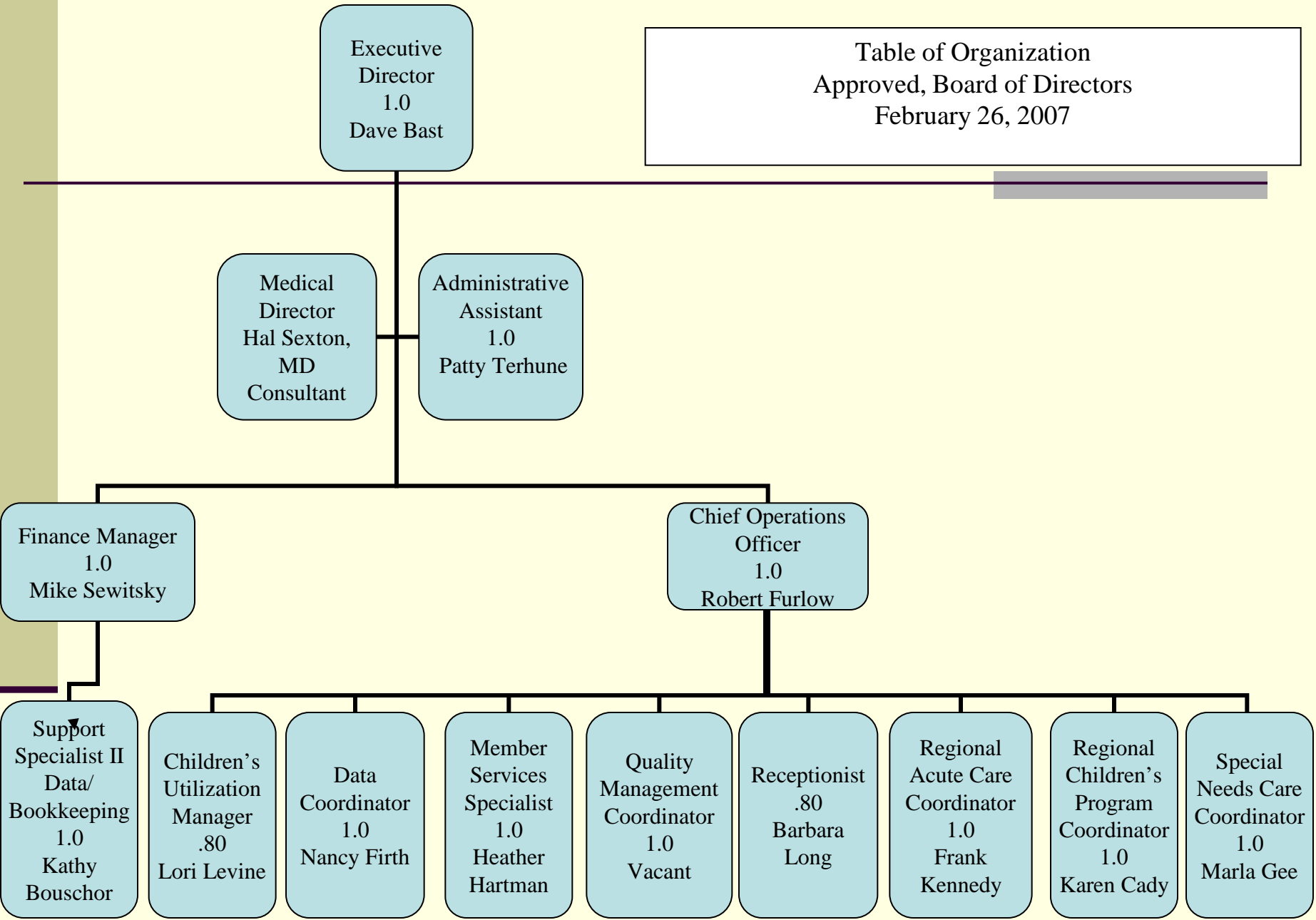


Table of Organization
Approved, Board of Directors
February 26, 2007



JBH Staff

JBH has 15 staff members that fulfill a variety of duties. They are:

- The Executive Director: Is responsible for internal and external operation of JBH.
- The Chief Operations Manager: Is responsible for the internal operations of the organization and overseeing the organization in the absence of the Executive Director.
- The Medical Director: Is a psychiatrist hired on contract that provides clinical oversight, appeals, and reviews of Utilization Management decisions.
- Finance Manager: Manages the finances and payroll for JBH. Acts as the Human Resources Benefits Manager. Manages JBH investments. Analyzes rates and capitation payments. Ensures that needed data is acquired for rate analysis.

Staff Continued

■ Utilization Management:

- Children's Utilization Manager: Provides oversight child inpatient utilization management for all of the member counties. Completes Continued Stay Reviews in conjunction with Children's Program Coordinator.
- Children's Program Coordinator: Oversees the Children's System of Care, including the Intensive Services Array (ISA). Oversees clinical aspects of treatment, provides clinical consultation, and performs site visits and clinical record reviews. Coordinates and facilitates multi-agency meetings.
- Regional Acute Care Coordinator: Oversees Utilization Management processes for adult members being placed in acute care settings for all member counties. Coordinates with hospitals to provide acute care.

Staff Continued

- Quality Management Coordinator: Oversight of JBH Quality management program. Assists our county partners with quality management, writes reports, analyzes data and provides staff support to the Quality Management Committee. Coordinates a minimum of two Performance Improvement Projects as required by the State.
- Member Services Specialist: Works with members in all counties and recruits JBH members to volunteer on appropriate committees. Assists counties in developing consumer run services and member issues. Responsible for JBH complaint and grievance program/processes.
- Special Needs Care Coordinator: Works with members who have special health care needs in addition to mental illness. Coordinates with the OHP Physical Health Plans, doctors, providers, and other agencies working with consumers to ensure that all their needs are being met.

Staff Continued

- Support Staff:
 - Administrative Assistant: Prepares the provider contracts, tracks contracts, and takes notes at the Board meetings and Board Working Committees. Assists the Executive Director and Operations Manager.
 - Data Coordinator: Responsible for the enrollee database reconciliation, working with the county partners, manages reports and assists in rate analysis.
 - Support Specialist: Works with accounts receivable and payable, inputs payroll. Assists with the preparation of financial reports and other financial processes.
 - Receptionist: Performs reception duties and supports other office duties as needed.

JBH's Future?

- Integration – Mental Health System
- Integration – Physical Health
- Integration – Substance Abuse
- Wraparound
- Regional Mental Health Authority
- Additional Providers?



Any Questions?